



**TOYOTA**

**MATERIAL HANDLING**

**Price Guide Spring 2014**

All Prices are Recommended Trade Prices and include GST

# TOYOTA GENUINE PARTS



## Vinyl ORS Seat Kit

### Features:

Seat switch, retractable seat belt, suspension, weight adjuster, ergonomic design and factory 12 month genuine parts warranty.

**\$473.00**  
EACH

**\$425.70**

EACH FOR ORDERS OF 5 OR MORE

**PRICES INCLUDE GST**

Part No. 53710-88303-71

## Toyota Filters

Toyota Genuine air filters and elements play an important role in protecting your engine components from external contaminants ensuring clean air is supplied to the engine. Periodic replacement is required to ensure power output and fuel usage is not affected.

**Toyota Outer Air Element**

**\$30.00**

Part No. 177432360071 (Left)

**Toyota Inner Air Filter**

**\$25.00**

Part No. 177442360071 (Right)

**PRICES INCLUDE GST**



Toyota Material Handling Australia (TMHA) has used its best endeavours to ensure brochure information is correct when published. All images are used for illustration purposes only. These are recommended parts and service trade prices only and there is no obligation for TMHA Dealers or Agents to comply with this recommendation. Prices include GST. Prices effective from 1 September 2014 until 30 November 2014. TMHA reserves the right to change, without notice, at any time prices, materials and specifications. TMHA, to the extent permissible at law, is not liable to any person for loss or damage arising from reliance upon information contained in this catalogue. Distributed nationally by Toyota Material Handling Australia Pty Limited ABN 38 104 644 635, 8 Secombe Place Moorebank NSW 2170. Printed September 2014.

# ALL PRICES INCLUDE GST

## Filter parts

Parts Number	Description	RTD
177442360071	Air Filter Inner, 6,7,8 series, 2TD	\$25.00
177432360071	Air Filter Outer, 6,7,8 series, 2TD	\$30.00
156017600971	Engine Oil Filter 2Z, 1DZ	\$9.00
156017600871	Engine Oil Filter 4Y	\$10.50
23300UB010	Fuel Filter 5,7 Series 1FZ	\$29.00
233102360071	Fuel Filter 6,7,8 series, 4Y, 5K engines	\$8.50
675023288171	Hydraulic Filter Return, 5,6,7 Series 35-50	\$28.00
675022054071	Hydraulic Filter Return, 7FB, FBE, 5,6FBRE	\$22.00
675022660071	Hydraulic Filter Return, 8 Series 10-J35	\$28.00
326701262071	Transmission Filter 5,6,7,8 series 10-50	\$11.00



Toyota Outer Air Filter

**\$30.00** EACH

177432360071 (Left)

Toyota Inner Air Filter

**\$25.00** EACH

177442360071 (Right)

## Hydraulic

Parts Number	Description	RTD
671202665071	Hydraulic Pump 8 Series 4Y, 1DZ, 20-J35	\$770.00
671303333071	Hydraulic Pump 7 Series 4Y, 20-J35	\$935.00



Hydraulic Pump

**\$770.00** EACH

671202665071

## Skid Steer Loader Parts

Parts Number	Description	RTD
046714031071	SSL Hydrostatic Charge Pump 4SDK8	\$1,540.00
383204250071	SSL Hydraulic Wheel Motor	\$3,250.00



Hydrostatic Charge Pump

**\$1,540.00** EACH

046714031071

## Alternators

Parts Number	Description	RTD
27060UB030	Alternator 4Y Engine, 7 & 8 Series	\$360.00
27060UC020	Alternator 14Z,15Z,13Z,2Z,1DZ Engine	\$435.00
270607830571	Alternator 3F,2Z,1Z,1DZ,13Z,2J,11Z Engine	\$354.00
27060UC010	Alternator 1DZ engine 02-2TD20,25	\$395.00



Alternator 4Y Engine

**\$360.00** EACH

27060UB030



Bring out the best in your Toyota forklifts, skid steer loaders and tow tractors. Choose Toyota Genuine Parts and Service.



# ALL PRICES INCLUDE GST

## Starter Motors

Parts Number	Description	RTD
281002055371	Starter Motor 3F,2F,4Y,4P,5P	\$192.00
281004280071	Starter Motor 2&4SDK8	\$365.00
281004029171	Starter Motor 5,6,7 Series, 02-2TD25 1DZ, 2Z, 13Z	\$385.00



Starter Motor  
**\$192.00** EACH  
 281002055371

## Brakes

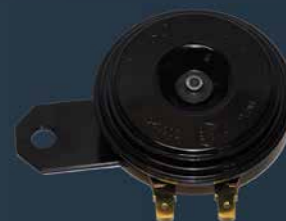
Parts Number	Description	RTD
474052360071	Shoe Brake 8FG-D;7FG-D;8FG-D	\$65.00
474041281071	Shoe Brake RH 42-7FG15/18, 7FB15/18	\$55.00
474051281071	Shoe Brake LH 42-7FG15/18, 7FB15/18	\$55.00
475143306071	Shoe Brake R/H 02-2TD20-25	\$49.50
475133306071	Shoe Brake L/H 02-2TD20-25	\$49.50
472204363071	Brake Master Cylinder 02-2TD20-25	\$220.00
474103250071	Wheel Cylinder 02-2TD20-25	\$55.00
472102332171	Brake Master Cylinder 7,8 Series 10-J35	\$145.00
474102342071	Wheel Cylinder 7,8 Series 20-J35	\$45.00



Shoe Brake  
**\$49.50** EACH  
 475143306071

## Electrical

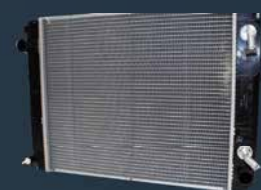
Parts Number	Description	RTD
581202347071	Horn Assembly 5,6,7,2TD series	\$49.00
575902334371	Ignition Switch Anti-Restart, 7,8 Series, 5SDK9-11	\$35.00
326102333071	Solenoid Transmission, 7,8 Series 10-J35	\$45.00
044382001171	Rotary Position Sensor Kit Steer Axle, 7,8 Series 10-J35	\$120.00
565402332171	Head Light R/H, 7,8 Series	\$150.00
565502332171	Head Light L/H, 7,8 Series	\$150.00



Horn Assembly  
**\$49.00** EACH  
 581202347071

## Cooling Parts

Parts Number	Description	RTD
164203661071	Radiator 8FD20, 30, J35, IDZ, 2Z engine	\$590.00
164202661071	Radiator 8FG20,30, J35 4Y engine	\$590.00
16100UB020	Water Pump Assembly Complete, 7 series 4Y	\$260.00
165112660171	Radiator Hose Inlet, 8 Series 4Y	\$15.00
9001A97002	Thermostat, 8 Series 4Y	\$14.50



Radiator  
**\$590.00** EACH  
 164203661071

**1800 425 438**

[www.toyotamaterialhandling.com.au](http://www.toyotamaterialhandling.com.au)



**MATERIAL HANDLING**



## We stand behind every forklift we service.

(We also get under it, look inside it, and thoroughly inspect it.)

At Toyota Material Handling, we place an important emphasis on expert service to keep your forklift working and your servicing costs as low as possible. No matter what forklift brand you use, Toyota Material Handling's factory trained technicians use the latest diagnostic equipment to ensure a fast and accurate

diagnosis, that helps to save you time and money. It's all part of our Toyota Service Advantage, and just another reason why a Toyota Material Handling service is genuinely better for your forklift and your back pocket.



# 1800 425 438

[www.toyotamaterialhandling.com.au](http://www.toyotamaterialhandling.com.au)



 **TOYOTA**  
**MATERIAL HANDLING**

SOLUTIONS FOR EVERY PALLET®