

# MOVE IT. CARRY IT. TOW IT. TAYLOR-DUNN IT.



1800 425 438  
[www.toyotamaterialhandling.com.au](http://www.toyotamaterialhandling.com.au)

 **TAYLOR-DUNN**<sup>®</sup>

 **TOYOTA**  
**MATERIAL HANDLING**

# BIGFOOT

Ergonomic comfort & vehicle performance



Photos are shown with optional features.



Taylor-Dunn's BIGFOOT, with its game changing design, offers a large operator's compartment, tilted steering, and sliding adjustable seats, which increases legroom and reduces operator fatigue.

Additional standard features include our GT Drive system, AC power, Smart View Display, hydraulic disc brakes, recessed tie-downs, 12 gauge smooth skin, unitised steel body, DC/DC converter and a heavy duty all gear drive train that ensures reliability and low maintenance costs.

## Features

- 36 & 48V AC powered
- 19 km/h speed
- 48-64 km range
- 1360 kg load capacity\*
- Large Operator's Compartment
- Tilted Steering
- Adjustable Seats

# BIGFOOT UTILITY VEHICLE

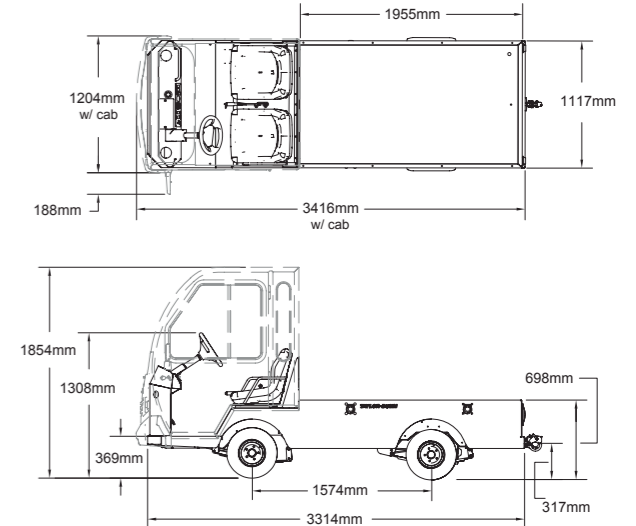
## Performance

LOAD CAPACITY	1360 kg*
MAX SPEED (UNLOADED)	19 km / h
TURNING RADIUS	348 cm
TOW CAPACITY	3400 kg

\*Standard Configuration. Actual load capacity depends on application & vehicle configuration. Maximum Towing Configuration. The Bigfoot can be configured to tow up to 17,500 pounds.

## Dimensions

OVERALL LENGTH	332 cm
OVERALL WIDTH	112 cm
HEIGHT (with cab)	131 cm (185 cm)
WHEEL BASE	158 cm
GROUND CLEARANCE	14 cm
BED SIZE	112 x 196 cm



## Power supply / Drive train

SYSTEM VOLTAGE	36 or 48 volt configuration
MOTOR	<b>36V:</b> 7.5 hp, 5.5 kW, AC, <b>48V:</b> 12.5 hp, 9.5 kW AC
DRIVE AXLE	Helical gear, oil bath transaxle, GT automotive differential
BATTERIES	210 amp-hour, lead acid, 6 volt
CHARGER	Built-in, 115 VAC / 60 Hz, 1kW with interlock, <b>48V:</b> 17 amp SCR
CONTROLLER	Solid state self diagnostic AC speed controller



GT Automotive Drive

## Chassis

FRAME	Fully welded, unitised, 12 gauge, smooth skin steel body
STEERING	Rack and pinion
SUSPENSION	Multi-leaf springs, front and rear
BRAKES	Rear hydraulic disc brakes with hand-operated parking brake
BUMPERS	Heavy duty steel integrated front & rear
TYRES	5.70 x 8, load range C, pneumatic

## General

UNIT WEIGHT	<b>36V:</b> 658 kg, <b>48V:</b> 710 kg
SEATS	Black adjustable bucket seats, driver's seat electrical interlock, 2 person
INSTRUMENTATION	Smart View Display: (battery status indicator, hour meter, fault code display), reverse buzzer, F-N-R switch, key switch, light switch, high / low speed switch, emergency power cut-off switch, DC / DC converter, dual USB port, electric horn
LIGHT ACCESSORIES	Dual LED head lights, taillights and brake lights (Halogen head lights with deluxe cab)
CONFORMANCE	Type E OSHA 1910.178, ANSI B56.8

## Options

- Fold-away seats
- Stake sides
- Ladder rack
- Portable charger
- Strobe light
- Diamond plate deck
- Aluminum drop-down sides
- Econo cab & vinyl doors
- Mid-range cab w/ steel doors
- Deluxe cab w/ steel doors
- Lockable cargo box
- Lift-out battery box
- Battery watering system
- Front disc brakes
- Various hitches
- Undercoating
- Galvanised frame
- Optional paint colours



# BIGFOOT XL

Comfort & performance utility vehicle



Photos are shown with optional features.



Taylor-Dunn is proud to announce an addition to its line of ergonomic BIGFOOT electric vehicles. The new BIGFOOT XL is a utility vehicle with a larger operator's compartment, hill climbing gusto, speed up to 29 km/h, and all-wheel hydraulic disc brakes.

Equipped with a 17 hp, 48 volt AC motor, GT drive, and rack and pinion steering, this electric utility vehicle will out-perform any other in its class.

Available customisations include deluxe cab, econo cab, fold-away seat, steel panel box, lockable cargo box, stake sides and aluminium drop-down sides.

## Features

- 48 volt AC system
- 29 km/h speed, 54 km range
- 1361 kg load capacity
- Zero Emissions
- Exceptional Handling
- XL Operator's Compartment
- Tilted Steering
- Adjustable Seats

# BIGFOOT XL UTILITY VEHICLE



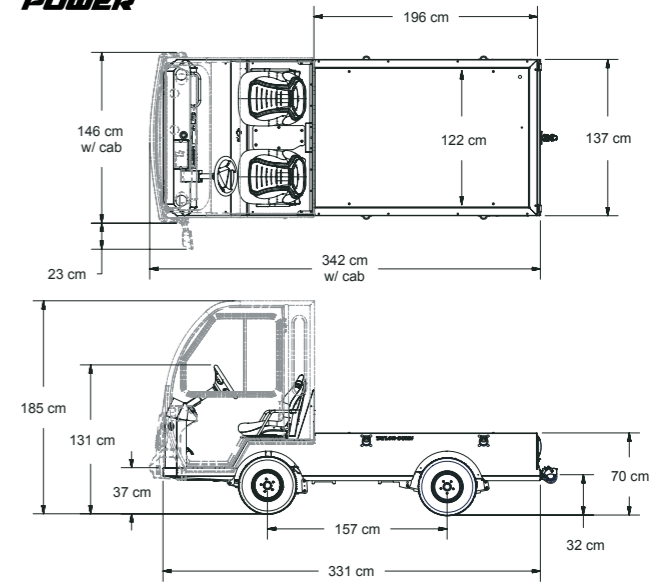
## Performance

LOAD CAPACITY	1361 kg*
MAX SPEED (UNLOADED)	29 km / h
TURNING RADIUS	368 cm
TOW CAPACITY	4536 kg

\*Based on Standard Configuration: Actual towing capacity is dependent on application, vehicle configuration.

## Dimensions

OVERALL LENGTH	332 cm
OVERALL WIDTH	145 cm
HEIGHT (with cab)	132 cm (188 cm)
WHEEL BASE	158 cm
GROUND CLEARANCE	14.7 cm
BED SIZE	137 x 196 cm



## Power supply / Drive train

SYSTEM VOLTAGE	48 volt
MOTOR	17 hp, 13 kW AC
DRIVE AXLE	Helical gear, oil bath transaxle, GT automotive differential
BATTERIES	260 amp-hour, lead acid, 6 volt, 8 each
CHARGER	Built-in, 115 VAC / 60 Hz, 1kW with interlock, 48V: 17 amp SCR
CONTROLLER	Solid state self diagnostic AC speed controller



GT Automotive Drive

## Chassis

FRAME	Fully welded, unitised, 12 gauge, smooth skin steel body
STEERING	Rack and pinion
SUSPENSION	Multi-leaf springs, front and rear
BRAKES	Front and rear hydraulic disc brakes, electric parking brake
BUMPERS	Heavy duty steel integrated front & rear
TYRES	20.5 x 8 x 10, load range E, pneumatic

## General

UNIT WEIGHT	891 kg
SEATS	Black adjustable bucket seats, driver's seat electrical interlock, 2 person
INSTRUMENTATION	Clear view display (speed, distance, battery status indicator, hours, input diagnostic & fault code display), dual USB port, emergency power cut-off switch, light switch, forward / off / reverse selector, reverse alarm, high / low speed selector, key switch, DC / DC converter (on with key switch), and electric horn
LIGHT ACCESSORIES	Dual LED head lights, taillights and brake lights
CONFORMANCE	Type E OSHA 1910.178, ANSI B56.8

## Options

- Fold-away seats
- Stake sides
- Econo cab
- Portable charger
- Strobe light
- Vinyl doors
- Aluminum drop-down sides
- Deluxe cab w/ steel doors
- Diamond plate deck
- Lockable cargo box
- Lift out battery box
- Directional signals
- Steel panel box
- Battery watering system
- Various hitches
- Undercoating
- Galvanised frame
- Optional paint colours



# LOADMASTER B-150

Tough & dependable burden carrier



Photos are shown with optional features.



Taylor-Dunn's Loadmaster is durable, reliable and cost effective for your commercial and industrial material handling needs. Equipped with a 36-volt electric drive train, this vehicle carries loads up to 726 kg at speeds up to 19 km per hour with a range up to 32 km.

This narrow aisle burden carrier is 113 cm wide by 274 cm long. It has a 279 cm turning radius with a 213 cm intersecting aisle clearance.

Adding optional equipment such as ladder rack, stake sides, tool boxes, tool cabinets or work bench makes this an excellent choice for any indoor or outdoor maintenance application.

## Features

- Driver seat interlock safety feature
- Fully welded unitised steel body
- Front & rear spring suspension
- Customisable to fit your application

# LOADMASTER B-150 UTILITY VEHICLE

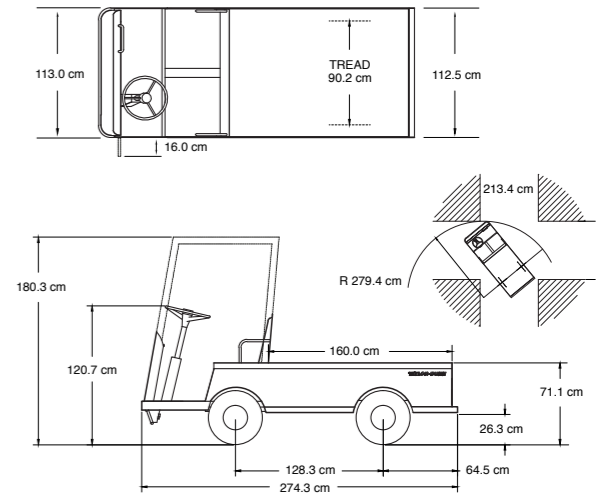
## Performance

LOAD CAPACITY	726 kg
TOW CAPACITY	3409 kg*
MAX SPEED (UNLOADED)	19 km / h
TURNING RADIUS	279 cm

\*Based on Standard Configuration Actual towing capacity is dependent on application, vehicle configuration, ballast weight, operating environment, and vehicle maintenance.

## Dimensions

OVERALL LENGTH	274 cm
OVERALL WIDTH	113 cm
HEIGHT (with cab)	121 cm (180cm)
DECK HEIGHT	71 cm
WHEEL BASE	128 cm
DECK SIZE	112 x 160 cm



## Power supply / Drive train

MOTOR	36V, DC, Series Wound, 6 Hp
SYSTEM VOLTAGE	36V DC
DRIVE AXLE	Direct Drive, Oil Bath, 14.78:1 Ratio, Transaxle Assembly, Sealed Helical Gear Reduction
BATTERIES	210 Amp-hour Lead Acid, 6 Volt, 6 Each
CHARGER	1 kW, Built-in, 36V, 110 VAC, 60Hz, w/ Interlock
CONTROLLER	275 Amp, Solid State Speed Controller
WIRING	Modular Harness Design, Weather Protected Connectors

## Chassis

FRAME	Fully Welded Unitised 16 Gauge Diamond Plate Steel
STEERING	24:1 Ratio, Automotive
SUSPENSION	Leaf Springs, Front and Rear
BRAKES	Rear Mechanical Drum w/ Hand Operated Parking Brake
BUMPERS	Heavy Duty Steel Integrated Front
TYRES	5.70 x 8 Load Range C Pneumatic

## General

UNIT WEIGHT	550 kg
SEATS	Split Seat Bottom Cushion w/ Full Length Back Rest in Black Vinyl, 2 Person Capacity
INSTRUMENTATION	Battery Status Indicator, Forward/Reverse Selector, Key Switch, Electric Horn
LIGHT ACCESSORIES	Brake lights
CONFORMANCE	Type E OSHA 1910.178, ANSI B56.8

## Options

- Hydraulic drum brakes
- Smooth skin body
- Windshield wiper
- Fiberglass cab
- Vinyl doors
- Fibreglass top
- Directional signals
- Portable charger
- Dual headlights
- Strobe light
- Ladder rack
- Stake sides
- Battery watering system
- Hour meter
- Reverse alarm
- Various hitches
- Undercoating / galvanising
- Optional coating colours



# STOCKCHASER

The stock to dock product solution



Photos may be shown with optional equipment.



Taylor-Dunn's Stockchaser is a cost effective solution to improve efficiency in any warehousing application. This unique narrow aisle, highly maneuverable vehicle provides an ergonomic advantage by quickly bringing the operator closer to stock when order picking.

## Features

- 24, 36 or 48 volt drive system
- 170 cm turning radius
- Zero emissions
- Regenerative braking (SC-100 only)
- 75 x 147 cm deck size
- Customisable to fit your application

# STOCKCHASER

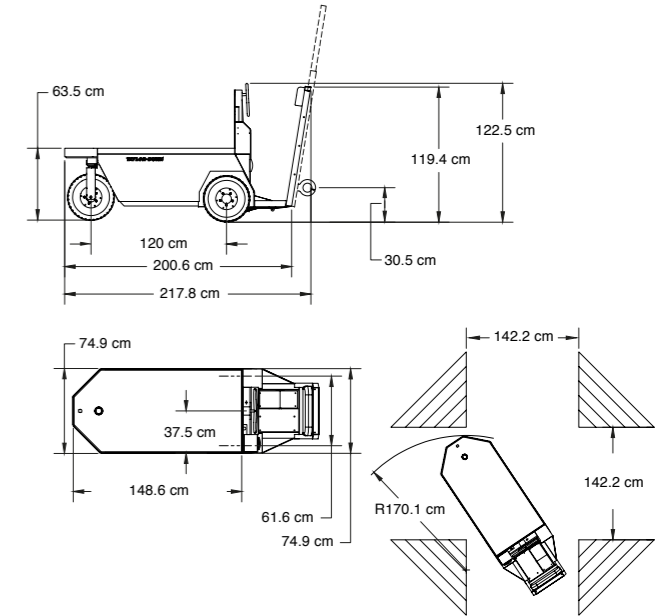
## Performance

	SC-090	SC-100
LOAD CAPACITY	408 kg	454 kg
MAX SPEED	14 km / h	13 km / h
TOW CAPACITY	907 kg*	2268 kg*
TURNING RADIUS	170 cm	170 cm

\*Based on Standard Configuration: Actual towing capacity is dependent on application, vehicle configuration, ballast weight, and operating environment.

## Dimensions

OVERALL LENGTH	218 cm
OVERALL WIDTH	75 cm
HEIGHT	123 cm
WHEEL BASE	120 cm
DECK SIZE	75 x 147 cm
DECK HEIGHT	64 cm



## Power supply / Drive train

MOTOR	SC-090 (Series) -24: 3.8 hp, SC-100 (Separately Excited) -24: 4.3 hp, -36: 6.6 hp, -48: 8.8 hp
SYSTEM VOLTAGE	24, 36, and 48 Volt
TRANSMISSION	SC-090: Direct Gear Drive, SC-100: GT Automotive Type Differential
BATTERIES	210 Amp-hour, 6 Volt, Lead Acid
CHARGER	SC-090-24 & SC-100-24: Built-in, 600 Watt, 110 VAC Automatic w/ Interlock SC-100-36: Built-in, 1kW, w/ Interlock, SC-100-48: Built-in, 1kW, 60 Hz, w/ Interlock, 110 VAC
CONTROLLER	Solid State Speed Controller, Regenerative Braking

## Chassis

FRAME	Fully Welded, Unitised, 16 Gauge, Diamond Plate Steel Body
STEERING	Manual, Chain Linkage, Front Fork, Clover Leaf Steering Wheel
SUSPENSION	Solid Mounted Rear Axle
BRAKES	Hand-Operated Parking Brake SC-090: Rear Drum, SC-100: Rear Disc
TYRES	4.80 x 8 Load Range B Pneumatic



GT Automotive Drive (SC-100 only)

## General

UNIT WEIGHT	SC-090: 760 (345) SC-100-24: 970 (440) SC-100-36: 1095 (497) SC-100-48: 1195 (542)
OPERATOR COMFORT	Padded Backrest
INSTRUMENTATION	SC-090: Battery Status Indicator, F-N-R Switch, Key Switch, Electric Horn SC-100: Smart View Display, F-N-R Switch, Reverse Alarm, DC/DC Converter, Electric Horn
CONFORMANCE	Type E OSHA 1910.178, ANSI B56.8

## Options

- Strobe light
- Head light / taillight
- Round steering wheel
- Knee pad, comfort kit
- Hour meter (sc-90 only)
- 4, 5 or 6 step ladder
- Diamond plate deck
- Portable charger
- Strobe light on a pole
- Soft solid tyres
- Solid cushion tyres
- Dual front fork
- Wider deck
- Clipboard holder
- Second level deck
- Lift-out battery box
- Roll-out battery box
- 225, 260 Amp-hour battery
- Various hitches
- Smooth skin frame
- Tie downs



# HUSKEY C-425

Manoeuvrable & ergonomic tow tractor



Photos are shown with optional features.



The Huskey C-425 combines high-powered towing in a compact manoeuvrable tow tractor, while providing optimal safety, comfort and ease of use.

With its 17 hp AC motor coupled with Taylor-Dunn's own GT drive, the Huskey provides an impressive 13,610 kg gross tow load.

The Huskey C-425 is equipped with a cushioned grip steering wheel, hitch with hand release, suspension seating and high visibility position. The operator enjoys effortless control in tight and narrow spaces with the high ratio steering gear and the 189 cm turning radius.

Optional features include cab or overhead guard, left-side battery extract and strobe light.

## Features

- Ergonomic design for operator comfort
- Maximum visibility for safety
- Fully welded all-steel construction
- Large battery compartment
- Customisable to fit your application

# HUSKEY C-425 TOW TRACTOR

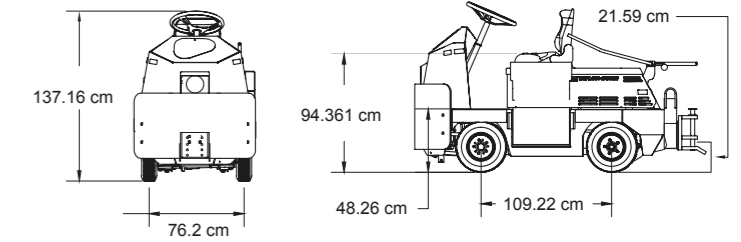
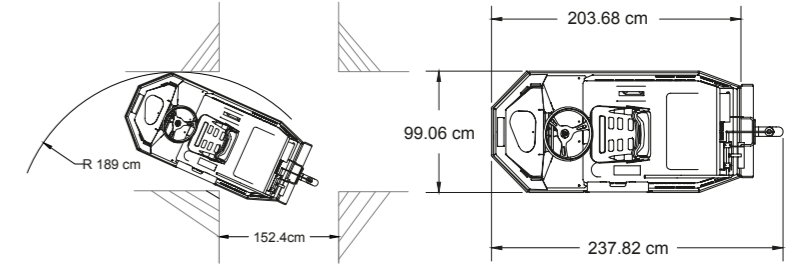
## Performance

TOW CAPACITY	13,610 kg*
DRAWBAR PULL	normal 2.7 kN ultimate 13.3 kN
MAX SPEED (UNLOADED)	16 km / h
TURNING RADIUS	189 cm

\*Based on Standard Configuration: Actual towing capacity is dependent on application, vehicle configuration, ballast weight, and operating environment.

## Dimensions

OVERALL LENGTH	237 cm
OVERALL WIDTH	99 cm
OVERALL HEIGHT (without cab)	137 cm
OVERALL HEIGHT (with cab)	209.5 cm
WHEEL BASE	109 cm
STEP HEIGHT	48 cm



## Power supply / Drive train

MOTOR	17 hp AC, enclosed
SYSTEM VOLTAGE	48 volt
DRIVE AXLE	GT automotive differential
BATTERY	Less industrial battery, compartment 32" L x 18-1/2"W x 24"H
CHARGER	Less charger
CONTROLLER	Self diagnostic AC speed controller with integrated thermal protection and safety monitoring features

## Chassis

FRAME	Fully welded, unitised, 10 gauge steel body, 3/16" steel chassis, 1/2" thick steel full
STEERING	Manual, re-circulating ball
SUSPENSION	Front and rear coil springs, rear shock absorbers
BRAKES	4-wheel hydraulic disc, automatic / electric parking brake
TYRES	4.00 x 8, soft solid, traction tread

## General

MAXIMUM OCCUPANCY	113kg
UNIT WEIGHT	1125 kg
SEAT	Single, adjustable, Black vinyl, with spring suspension and electric interlock switch
INSTRUMENTATION	Smart View Display (battery status indicator, hour meter, fault code display) forward / reverse selector, key switch, electric horn, reverse alarm, DC / DC converter, power cut-off switch
LIGHT ACCESSORIES	Head light, taillight, brake light
HITCH	Spring loaded E-type with hand release lever
CONFORMANCE	Type E OSHA 1910.178, ANSI B56.9

## Options

- Portable / built-in charger
- Reverse lights
- Non-marking tyres
- Hitches
- Left-side battery extract
- Beacon or strobe light
- Directional signals
- Extra wide traction tyres
- Soft solid tyres
- Various hitches
- Custom paint colour
- Galvanising / undercoating



# MULE C-432

Heavy duty narrow towing solutions



Photos are shown with optional features.



Our three-wheel design allows the C-432 to provide the shortest turning radius available in a sit-down combination burden carrier / tow tractor. With its 71 cm wheelbase, this vehicle can maneuver into corners other powered vehicles simply cannot reach.

Equipped with heavy-duty batteries and a built-in fully-automatic charger, this vehicle is always ready to go. It's ideal for moving loads over smooth floors in warehouses, hospitals, schools, and hotels where quiet, fume-free operation is necessary.

Customisations include strobe light, reverse alarm, portable charger, head lights, taillights, fibreglass cab, vinyl doors, side / rear view mirrors, hitch, and soft solid tyres.

## Features

- Built-in fully automatic charger
- Easily clears narrow aisles and doorways
- Fully-welded all steel construction
- Adjustable seat
- 75 x 117 cm deck (-cab)
- Customisable to fit your application

# MULE C-432 TOW TRACTOR

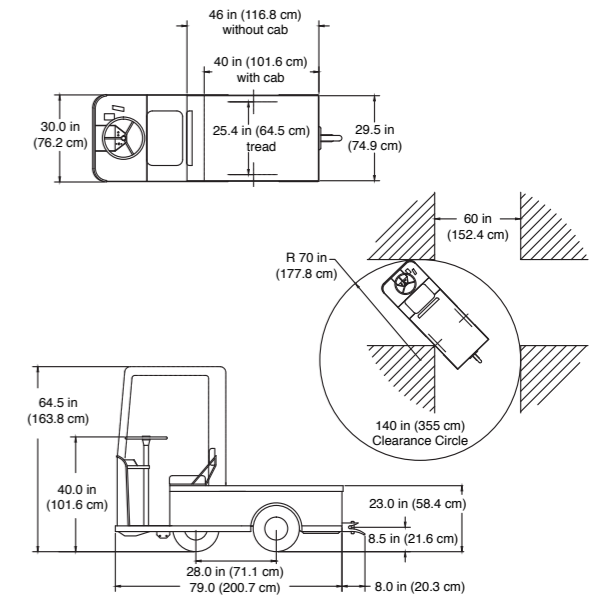
## Performance

LOAD CAPACITY	635 kg
TOW CAPACITY	3969 kg*
DRAWBAR PULL	780 kN
MAX SPEED (UNLOADED)	14 km / h
TURNING RADIUS	178 cm

\*Based on Standard Configuration Actual towing capacity is dependent on application, vehicle configuration, ballast weight, operating environment, and vehicle maintenance.

## Dimensions

OVERALL LENGTH	201 cm
OVERALL WIDTH	76 cm
HEIGHT (with cab)	102 cm (164 cm)
DECK HEIGHT	58 cm
WHEEL BASE	71 cm
DECK SIZE (with cab)	75 x 117 cm (75 x 102 cm)



## Power supply / Drive train

MOTOR	36V, 4.5 kW, DC, 6 Hp
SYSTEM VOLTAGE	36V DC
DRIVE AXLE	Power Traction Automotive Differential
BATTERIES	210 Amp-hour Lead Acid, 6 Volt, 6 Each
CHARGER	Built-in Automatic, 1 kW, 36 Volt, 110 VAC w/ Interlock
CONTROLLER	400 Amp, 36 Volt, Solid State

## Chassis

FRAME	Fully Welded, Unitised, 16 Gauge, Diamond Plate Steel Body
STEERING	Manual, Chain and Sprocket Reduction to Front Fork
SUSPENSION	Solid, Front and Rear
BRAKES	Mechanical Rear Drum Brakes, Hand-Operated Parking Brake
TYRES	4.80 x 8, Load Range B, Pneumatic

## General

MAXIMUM OCCUPANCY	1 (113 kg)
UNIT WEIGHT	416 kg
SEATS	Single, Adjustable, Black Vinyl, w/ Safety Seat Switch
INSTRUMENTATION	Battery Status Indicator, Forward / Reverse Selector, Key Switch, Electric Horn
CONFORMANCE	Type E OSHA 1910.178, ANSI B56.8 and B56.9

## Options

- Head light / Taillight
- Portable charger
- Reverse lights
- Hour meter
- Non-marking tyres
- Windshield wiper
- Reverse alarm
- Beacon or strobe light
- Fibreglass cab
- Directional signals
- Stake sides
- Diamond plate deck
- Soft solid tyres
- Side / rear view mirrors
- Vinyl doors
- Various hitches
- Custom paint colour
- Undercoating / galvanising



# STEPSAVER

Efficient & versatile personnel carrier



Photos may be shown with optional equipment.



Taylor-Dunn's Stepsaver provides personnel transportation for executives, supervisors, security, maintenance, mail carriers, and other workers whose jobs keep them on the go.

Stepsaver's versatile design allows you to convert the vehicle from personnel carrier to burden carrier in a matter of seconds. These vehicles can carry up to two people or a 272 kg load to the job site.

Standard features include a horn, modularised control system, tiller-loop steering, on-board charger, and an all-welded steel unitised body and frame. Additional standard features on the SS-536 include head light, taillight, brake light and flip-down passenger seat.

## Features

- All-welded unitised steel body
- On-board charger
- Modularised control system
- Customisable to fit your application

# STEPSAVER PERSONNEL CARRIER

## Performance

	SS-534	SS-536
LOAD CAPACITY	227 kg	272 kg
TOW CAPACITY	1927 kg*	907 kg*
MAX SPEED (UNLOADED)	16 km/h	14 km/h
TURNING RADIUS	190 cm	190 cm

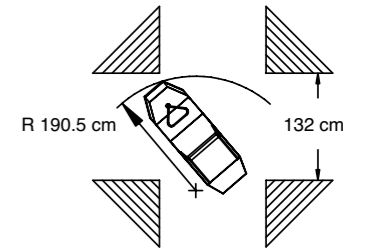
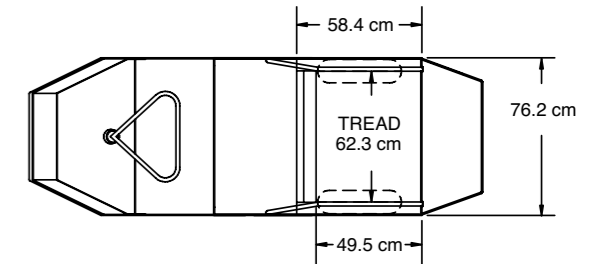
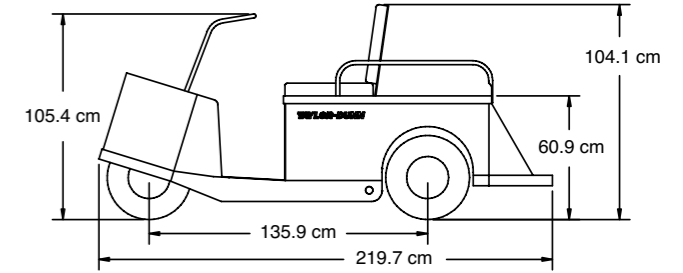
\*Based on Standard Configuration: Actual towing capacity is dependent on application, vehicle configuration, ballast weight, and operating environment.

## Dimensions

	SS-534	SS-536
OVERALL LENGTH	194 cm	220 cm
OVERALL WIDTH	76 cm	
HEIGHT (with cab)	105 cm (175cm)	
DECK HEIGHT	61 cm	
WHEEL BASE	136 cm	
DECK SIZE	69 x 43 cm	76 x 48 cm

## Power supply / Drive train

MOTOR	24V, 935 rpm, DC, Series Wound, 4.5 hp
SYSTEM VOLTAGE	24V DC
TRANSMISSION	Transaxle Assembly, Sealed Helical Gear, 12:1 Reduction
BATTERIES	Four, 6V, 210 Amp-Hour, Lead Acid
CHARGER	Built-in, 24V, 600 Watt, 25 Amp, 110 VAC, w/ Interlock
CONTROLLER	275 Amp, Solid State Speed Controller
WIRING	Modular Harness Design, Weather Protected Connectors



## Chassis

FRAME	Fully Welded Unitised 16 Gauge Diamond Plate Steel
STEERING	Tiller Loop, Manual
DRIVE AXLE	<b>534:</b> Belt Drive <b>536:</b> Direct Drive
SUSPENSION	<b>534:</b> Front Shock Absorber, Rear Coil Springs <b>536:</b> Coil Springs, Front and Rear
BRAKES	<b>534:</b> Centre Brake Band <b>536:</b> Drum with Foot Operated Parking Brake
TYRES	4.80 x 8 Load Range B Pneumatic

## General

UNIT WEIGHT	<b>534:</b> 713 (323) <b>536:</b> 701 (318)
SEATS	<b>534:</b> Seat Cushion, Black Vinyl <b>536:</b> Seat Cushion, Back Rest Converts to Passenger Seat
INSTRUMENTATION	Battery Status Indicator, Forward / Reverse Selector Switch, Key Switch, Electric Horn, 12V DC / DC Converter (on with key switch)
LIGHT ACCESSORIES	<b>536:</b> Head light, taillight, brake light (optional on SS-534)
CONFORMANCE	Type E OSHA 1910.178, ANSI B56.8

## Options

- Portable charger
- Smooth skin body
- Steel cab
- Strobe light
- Front bumper
- Diamond plate deck
- Battery watering system
- Hour meter
- Reverse alarm
- Geared steering
- Non-marking tyres
- Soft solid tyres
- Undercoating / galvanising
- Various hitches
- Optional paint colours

## SS-534 Options

- Flip-down passenger seat
- Head / tail / brake lights





# MORE THAN JUST MARKET LEADING FORKLIFTS



For over 60 years Taylor-Dunn has been the leading solution for customers in a variety of markets around the world, producing utility vehicles, stock chasers and tow tractors that increase efficiency and business performance. Now available in Australia from Toyota Material Handling, you can rely on our outstanding customer service and support to bring Taylor-Dunn performance to your business.

Toyota Material Handling is also proud to offer an unparalleled range of logistics and automation solutions to its Australian customers – including AGV driverless forklifts, elevated work platforms, scissor lifts, ride on and walk behind sweepers and scrubbers, plus a comprehensive range of warehouse racking solutions. And with all of our products, we provide you with the service and replacement parts support you'd expect from a world leader.

The benefits of dealing with Toyota Material Handling include:

- Australia's biggest range of materials handling equipment
- No.1 counter-balance forklift consecutively since 1987\*
- Leading product, safety and environmental initiatives
- 100% Toyota owned branches
- Australia's largest rental fleet with over 23,500 units
- Forklift rentals from 1 day to 5 years with flexible finance options available
- 450+ service support staff & 300+ service vans

So, whether we are supplying a single part or helping to manage your entire fleet, our aim remains the same – adding value to your operation.

**It's all part of the Toyota Advantage.**

 **Toyota Material Handling Australia** 8 Secombe Place, Moorebank NSW 2170

 **1800 425 438**

 [www.toyotamaterialhandling.com.au](http://www.toyotamaterialhandling.com.au)

