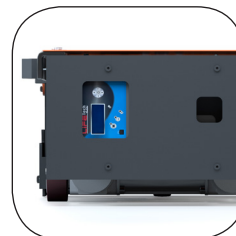
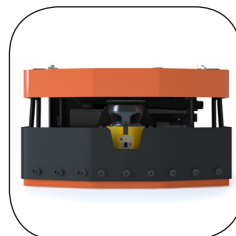
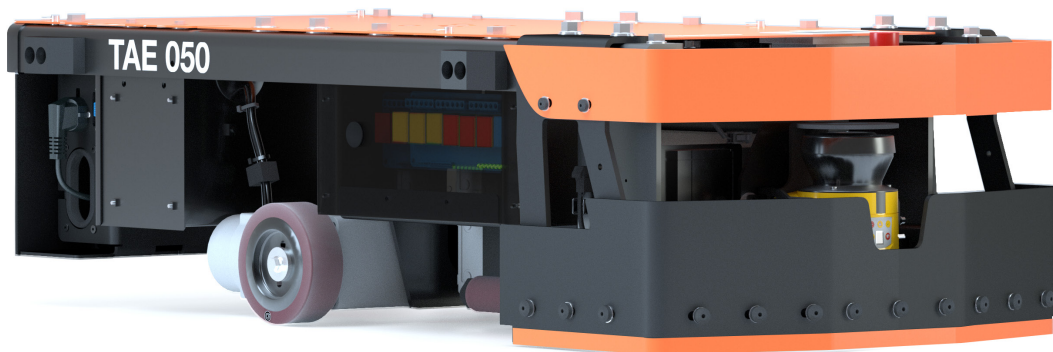


Automated guided tow cart 750 kg

AUTOPILOT
TAE050 HD+



Tow cart

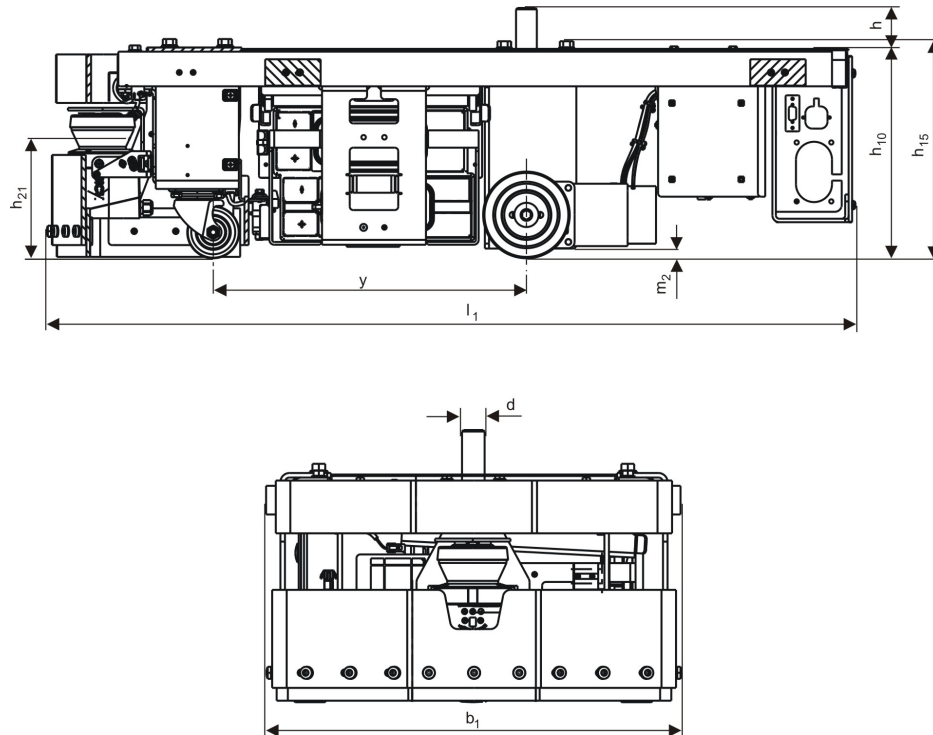
Truck specifications				TAE050 HD+	
Identification	1.1	Manufacturer			Toyota
	1.2	Model			Heavy Duty
	1.3	Drive			Electric
	1.4	Operator type			Auto
	1.5	Load carrying capacity	Q	kg	140
	1.7	Rated drawbar pull	F	N	487
		Rated capacity trailer		kg	750
1.9	Wheelbase	y	mm	452	
Weight	2.1	Service weight without battery		kg	102
	2.3	Axle load, without load, drive/caster wheels		kg	50/40
Wheels	3.1	Drive/support arm wheels			Uretan/Uretan
	3.2	Wheel size, front		mm	Ø 75x40
	3.3	Wheel size, rear		mm	Ø 125x45
	3.5	Wheels, number front/rear (x = drive wheels)			1/2x
Dimensions	4.2	Total heigh	h_{15}	mm	316
		Height, laser beam	h_{21}	mm	173
	4.12	Coupling height, tow pin	h_{10}	mm	302
		Height, tow pin	h	mm	59
		Diameter, tow pin	d	mm	30
	4.19	Overall length	l_1	mm	1167
	4.21	Overall width	b_1/b_2	mm	551
4.35	Turning radius	W_a	mm	600	
Performance data	5.1	Travel speed, with/without load		m/s	0,55/0,55
	5.8	Maximum gradient capability, carried load/towed load		%	3/1
	5.10	Service brake			Electromagnetic
Electr. motor	6.4	Battery voltage/nominal capacity	K_5	V/Ah	24/64
	6.5	Battery weight		kg	42

All data are based on table configuration. Other configurations may give other values.

Truck performance and dimensions are nominal and subject to tolerances.

Toyota Material Handling Manufacturing Sweden AB products and specifications are subject to change without notice.

Dimensional drawings



Load handling matrix

				
Load Capacity table	Bolt-on rack	Trailer Towing	Compact Towing - Light	Compact Towing - Heavy
TAE050 HD+	140 kg	750 kg	0-75 kg	75-200 kg *

* Depending on floor and trolley

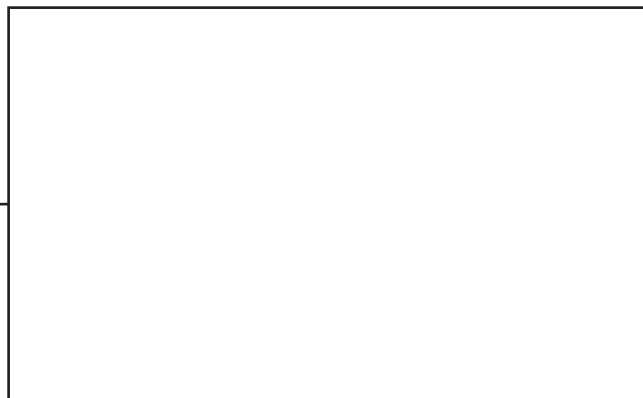
Load handling at different customer segments

● = Common ○ = Less common

Customer segments	Bolt-on rack	Trailer Towing	Compact Towing - Light	Compact Towing - Heavy
Automotive	○	●	○	●
Industry	○	●	●	●
Parts Logistics	●	●	●	●

Truck features:

- Two drive command principles as standard
- Up to 100 drive missions created with a standard PC using Excel
- Electrical tow pin
- XFC-battery 24V/64Ah
- Optical remote control system
- Control panel with touch screen
- On-board fast charger (option)
- SICK S300 PRO or EXP (option)
- Standard tunnel-trolleys in aluminum are available in two sizes:
 - Full pallet size: 1200x800x500 mm (LxWxH)
 - Half pallet size: 600x800x500 mm (LxWxH)
- The optional bolt-on rack can be used in one, two or three levels.
 - Table size: 900x500x250 mm (LxWxH)



TP-Technical Publications, Sweden — 749994-040, version 3, 2019-02-12

TOYOTA

MATERIAL HANDLING