

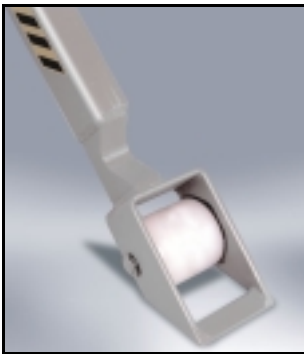


Product Information

L 20 Stainless, HL/HLE 10 I

WORLD CLASS

WORLD WIDE



L 20 Stainless

Specially designed for corrosive environments or applications that demand high standards of hygiene — such as food processing or pharmaceutical industries.

- All components in stainless steel or other non-corroding materials gives the truck reliability and long life.
- All surfaces are glass blasted to give a smooth surface and ensure easy cleaning.
- Welded tow bar attachment provides high reliability.
- 10/12 grease nipples ensures a long service life.

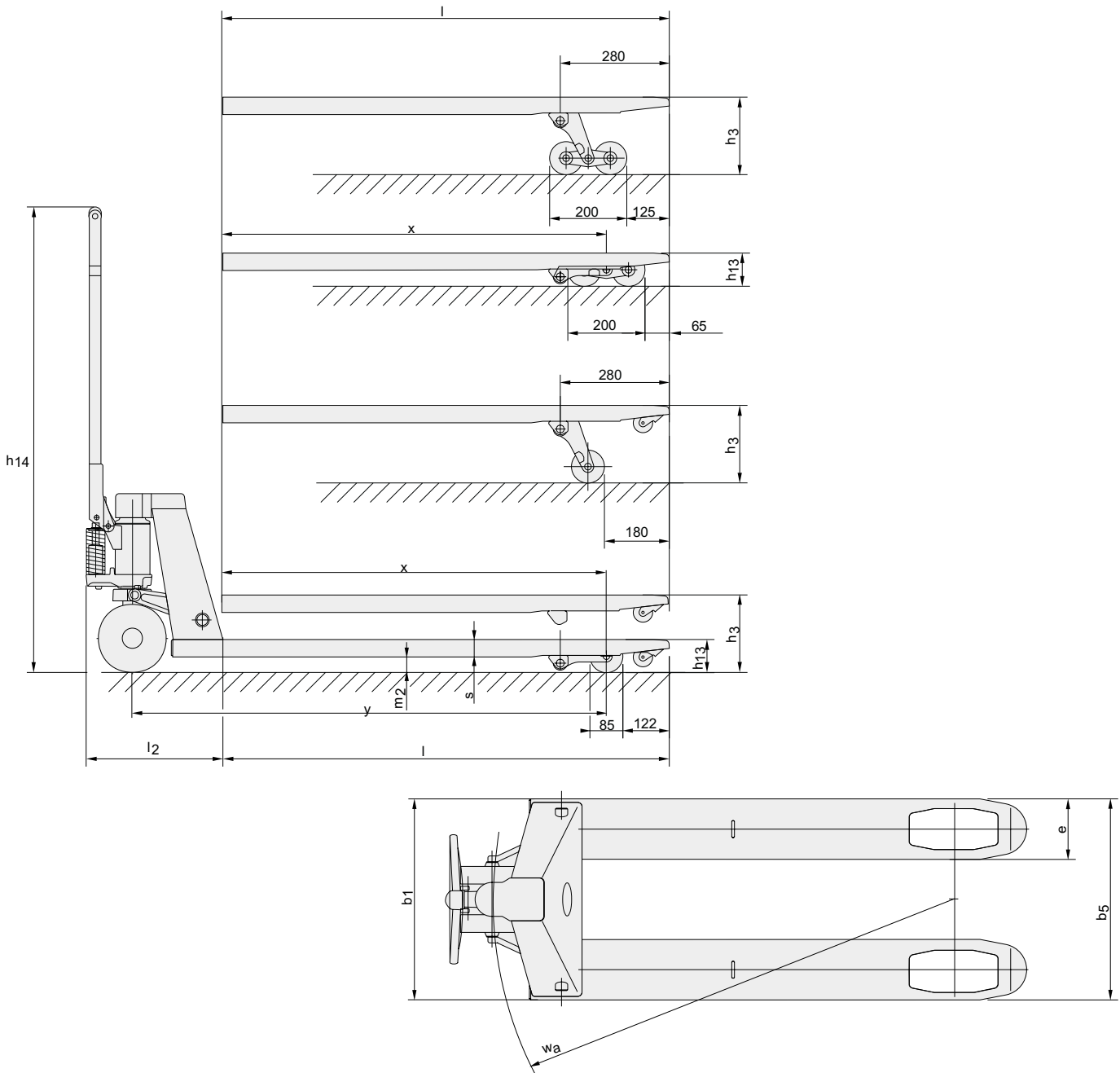
HL/HLE 10 INOX

Designed for corrosive environments or applications with high standards of hygiene where the goods need to be handled at a convenient working height. Available both in a manual and an electric version.

- Frame, tow bar, axles and fork wheel bearings in stainless steel gives reliability and a long life to the truck.
- Glass blasted smooth surfaces ensures easy cleaning.
- Integrated battery charger.
- Adjustable stabilizers automatically brake the truck when forks are elevated, to ensure safety and stability in operation.

Technical Details	L 20 Stainless		Dimensions	mm	
Rated capacity	kg	2000	x	Front axle to fork face	985
Weight	kg	65	y	Wheel base	1217
Steering wheel	mm	Ø 175x60	h ₃	Lift height	200, 190, 125
Fork wheels, single/bogie	mm	Ø 85x100/ Ø 85x75	h ₁₄	Height of handle in neutral pos.	1220
			h ₁₃	Height of lowered fork	85
Pump force, rated capacity	kg	30	l ₂	Truck length incl. back of fork	356
Pulling force	kg	12.5 ¹⁾	b ₁	Chassis, width	685/520
			s	Fork thickness	45
			e	Fork width	156
			l	Fork length	800/910/1000/ 1150/1220
Datas are based on l = 1150mm, nylon wheels					
			b ₅	Width across fork	520/685
			m ₂	Floor clearance mid wheelbase	40/30/10
			A _{st}	Aisle width, min (Pallet 800x1200 mm)	1807
1) With rated capacity on a smooth, dry level concrete floor					
			W _a	Turning radius	1392

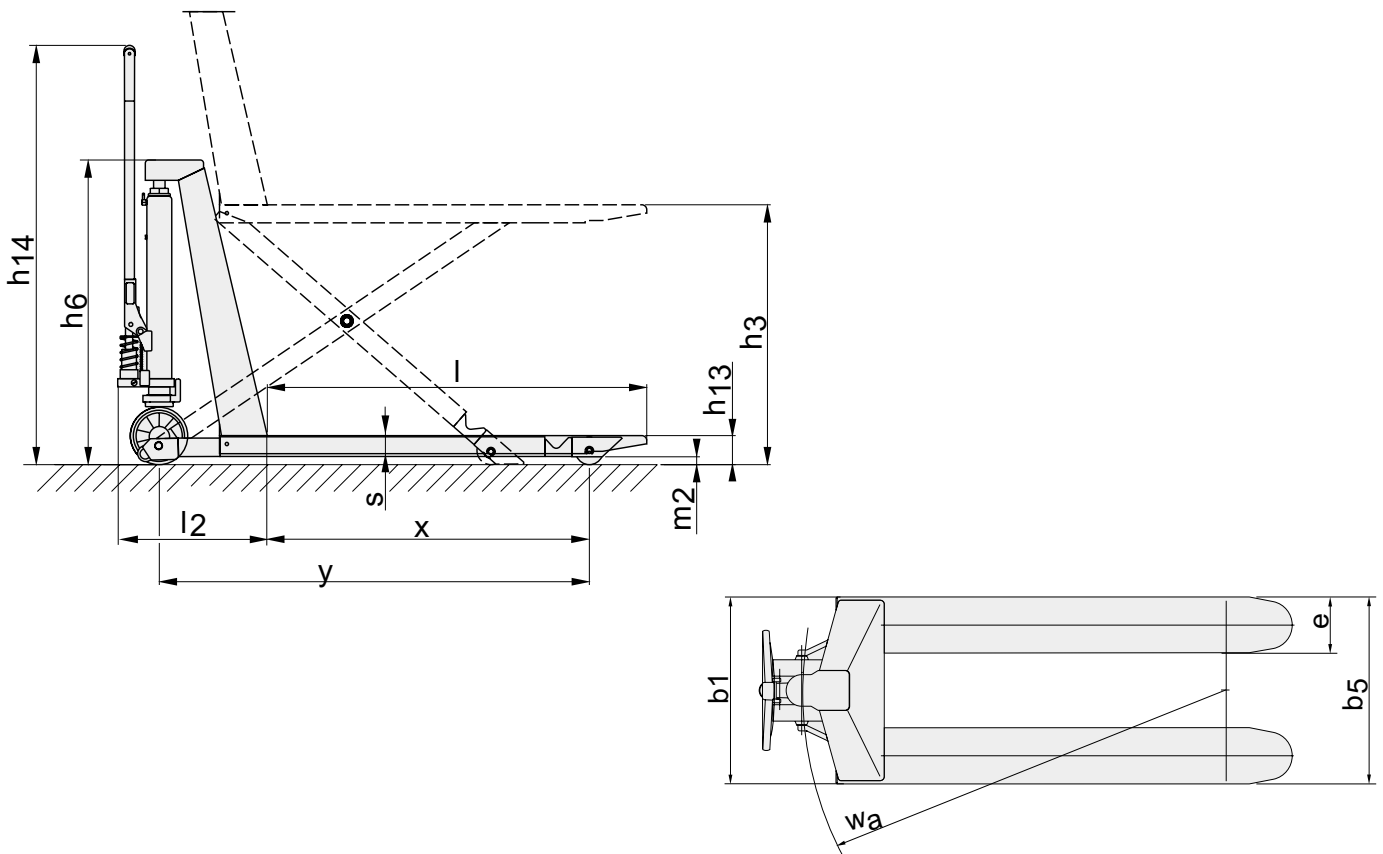
Performance may vary due to system efficiency tolerance and represents nominal values obtained under typical operating conditions.
BT Products AB products and specifications are subject to change without notice.



Technical Details		HL 10 I	HLE 10 I
Power unit		—	Battery
Rated capacity	kg	1000	1000
Weight without battery	kg	121	135
Steering wheels, polyurethane	mm	Ø 175x60	Ø 175x60
Lifting time fork, without/with rated load	s	—	11/19
Lifting height per pump stroke, without/with rated load	mm	32/13	—
No. of pump strokes to full elevated fork, without/with rated load		28/65	—
Battery, min.	V/Ah		12/54

Dimensions, mm		HL 10 I	HLE 10 I
x	Front axle to fork face	980	980
y	Wheel base, fork raised/lowered	990/1280	990/1280
h_3	Lift height	810	810
h_{14}	Height of handle in neutral pos.	1280	1280
h_{13}	Height of lowered fork	88	88
h_6	Height of truck	930	930
l_2	Truck length incl. back of fork	455	455
b_1	Chassis, width	560 ¹⁾	560 ¹⁾
s	Fork thickness	50	50
e	Fork width	160	160
l	Fork length	1190	1190
b_5	Width across fork	560 ¹⁾	560 ¹⁾
m_2	Floor clearance mid wheelbase	20	20
A_{st}	Aisle width, min (Pallet 800x1200 mm)	1875	1875
W_a	Turning radius	1455	1455

1) Special dimension 685mm available





The product complies with the EC-directives



BT Industries

Developed and produced by
BT Products AB



SS-EN ISO 9001, No. 003
ISO 14001, No. M005

BT Industries AB
[HTTP://www.bt-industries.com](http://www.bt-industries.com)